



YOUR SPECIALIST FOR BESPOKE JOINERY



Joinery Portfolio
September 2023

WELCOME TO DBSJ

Founded in 2011, DBSJ helps clients transform their domestic and work environments through fit-out, design and bespoke joinery manufacture. Specialising in workspace and retail fit-outs and residential and commercial joinery, our team has worked for private clients as well as well-known brands.

We operate from a modern, purpose-built office and well-equipped joinery workshop in the heart of Canterbury. With many of our clients based in London, we can be in the city within an hour and have delivered projects all over the UK.

[SPECIALIST FIT OUT >](#)

[SPECIALIST JOINERY >](#)

[SPECIALIST DESIGN >](#)



SPECIALIST JOINERY

Our highly skilled and fully trained tradespeople produce hard-wearing bespoke joinery items from our fully equipped manufacturing facility, prior to installation on site.

As a result of our on-site joinery manufacturing, our clients benefit from UK manufacturing, quick sample production and rapid turnaround times.

Our skilled joinery experts are highly versatile, competent in working with a wide range of materials befitting your project, including; hardwoods, veneers, softwoods, MDF, laminates, steel, glass, upholstery and solid surfaces such as Corian, Hi-Mac, Staron, Avonite and Meganite.

With full in-house design capabilities, our joinery management team work closely with you to evolve your concepts into working manufacturing CAD drawings tailored to your requirements.

With extensive experience in the use of 3D software, we can create photo-realistic visuals providing technical drawings for machining.



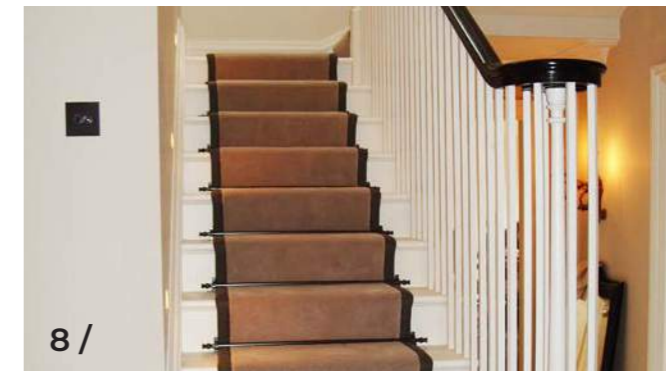
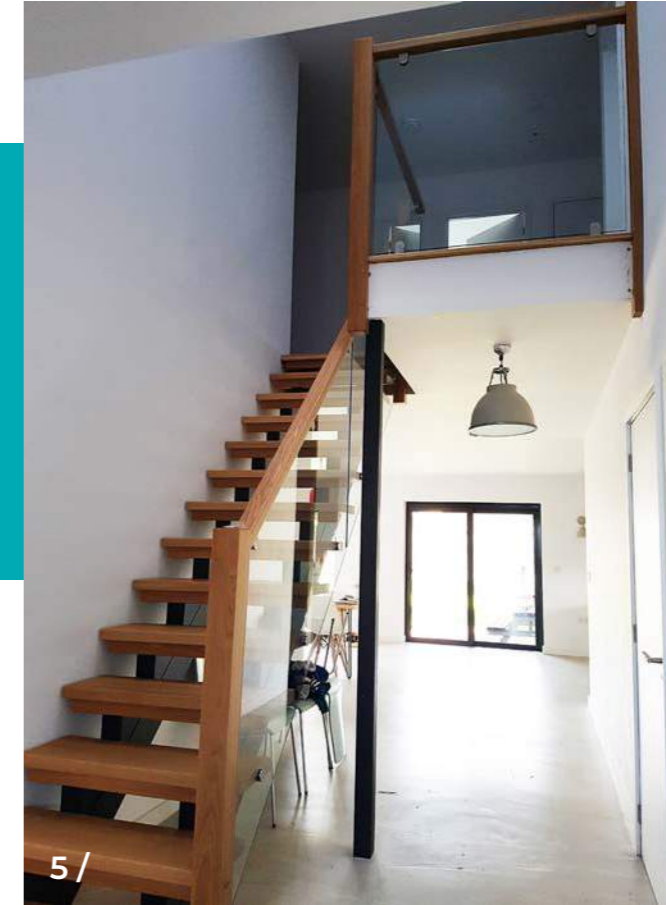
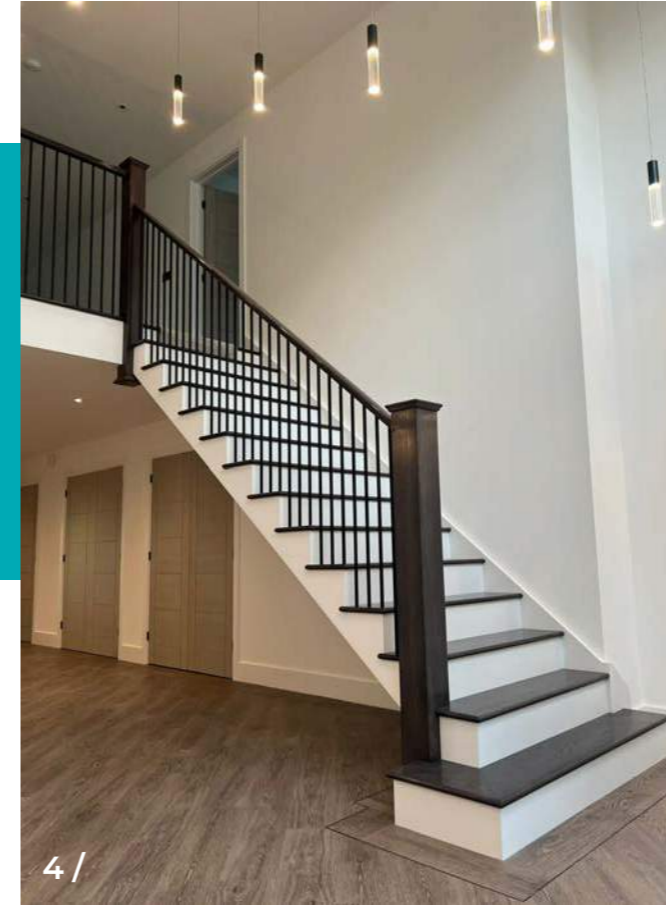
DuPont™ CORIAN®

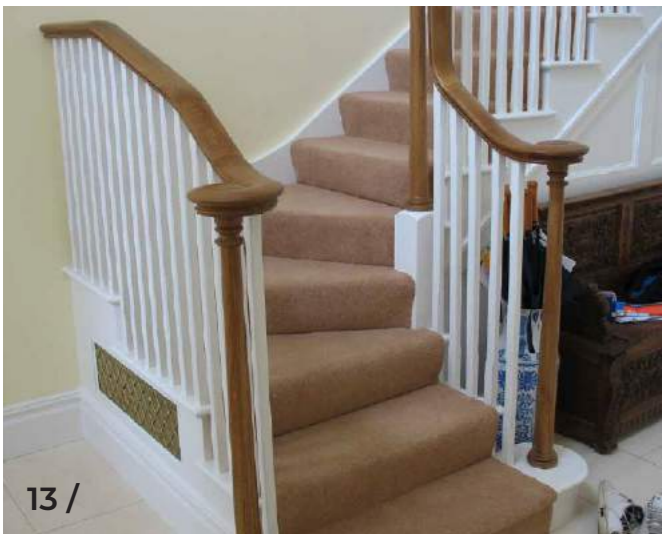
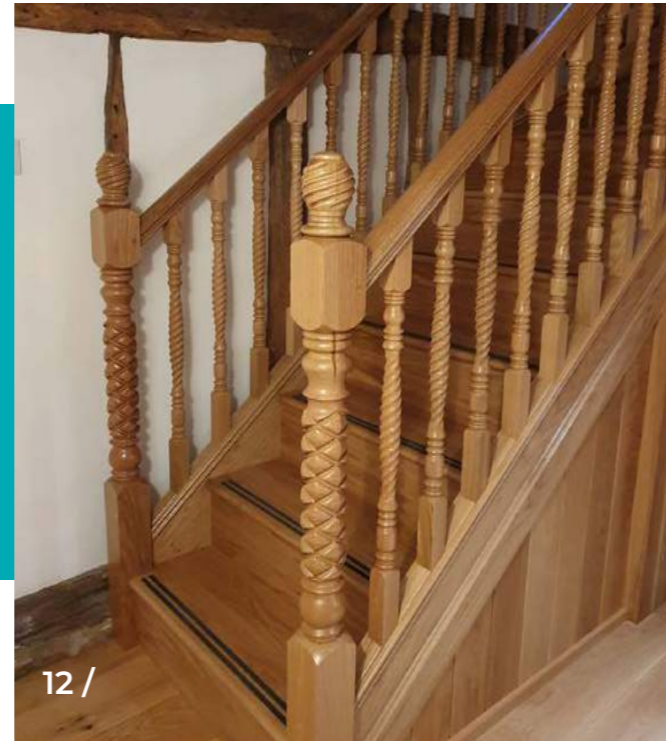
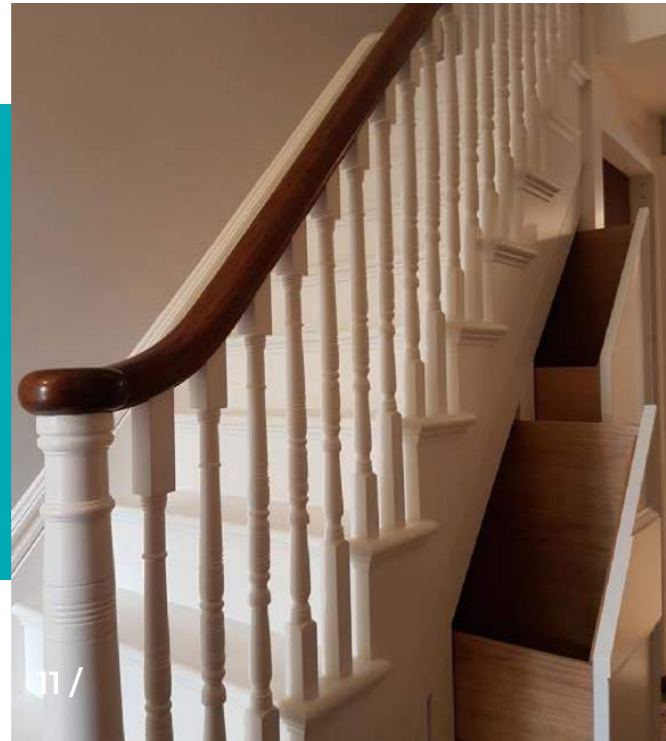
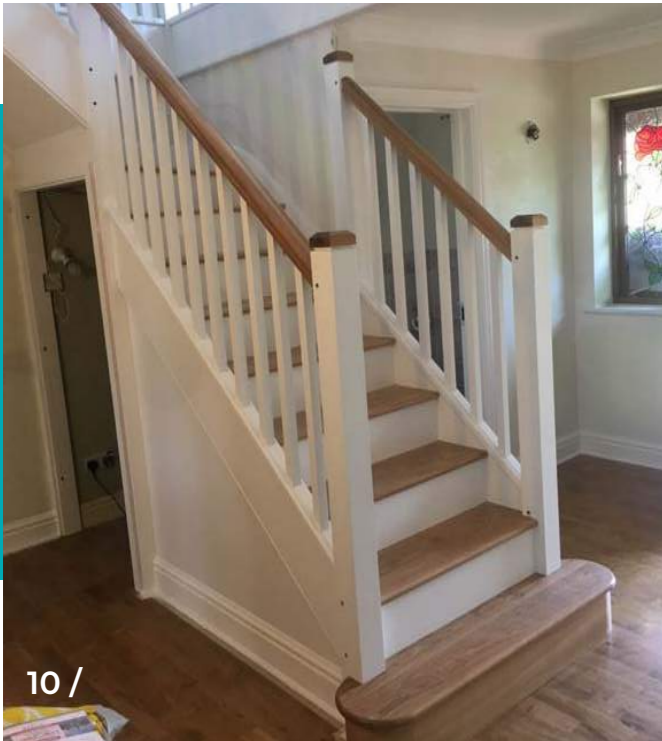
PROUD TO BE REGISTERED SUPPLIERS AND INSTALLERS OF CORIAN.

STAIRCASES

- 1/ Closed string solid oak staircase with turned newels and spindles and glazed spandrel
- 2/ Enclosed spiral staircase with glazed first-floor balustrade
- 3/ External iroko hardwood staircase with open rise design
- 4/ Modern cut-string staircase with metal spindles and a contrasting hardwood and paint finish

- 5/ Open-rise staircase on carriages with oak tread and painted carriages
- 6/ Cut and concealed string staircase with metal spindles and matching Wainscot panelling
- 7/ Oak volute handrail detail
- 8/ Painted cut string staircase
- 9/ Walnut tread and risers with a painted string





STAIRCASES CONT.

10 / Closed string, painted staircase with contrasting oak treads and handrails

11 / Traditional cut string staircase with a turned spindle and "bun" handrail detail

12 / Solid oak closed string staircase with anti-slip inserts and barely twisted spindles, newel posts and caps

13 / Painted cut string staircase with continuous oak handrails

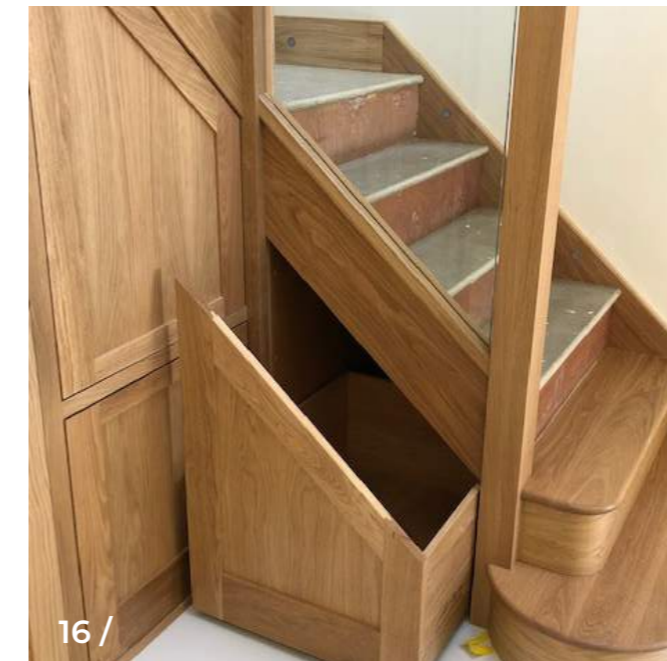
14 / Staircase sample mock-up showing various veneers and details for client approval

15 / Walnut closed string staircase with glass balustrade

16 / Oak and glass closed string staircase complete with under stair storage

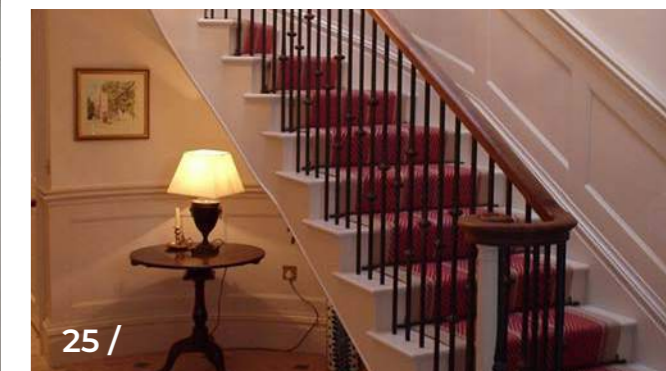
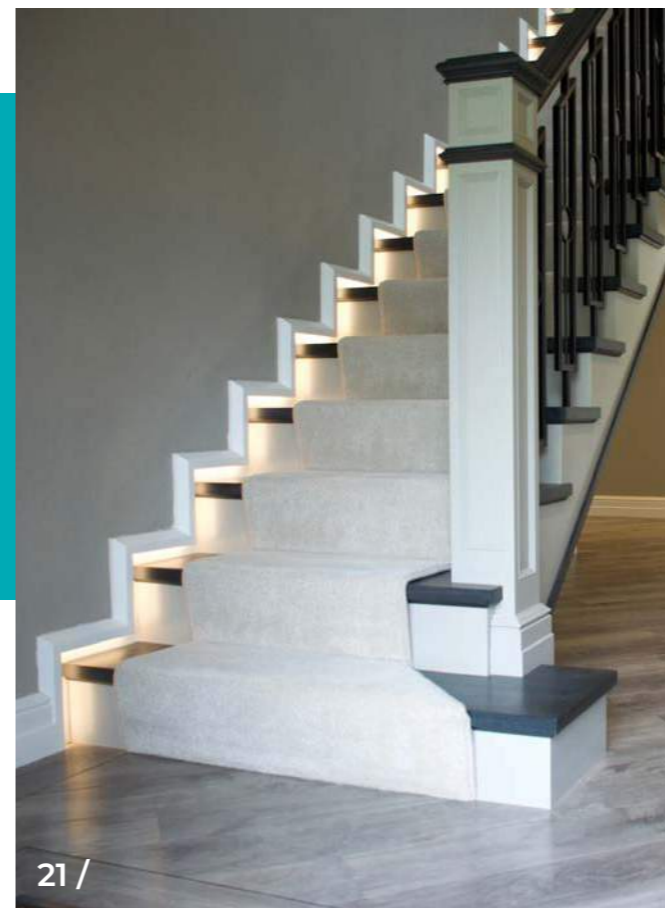
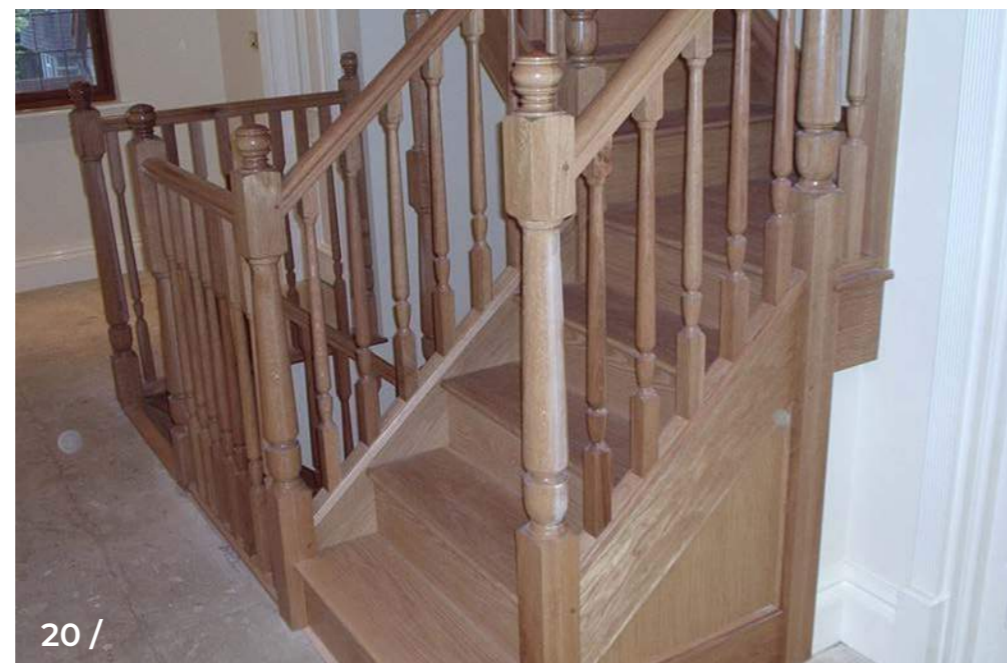
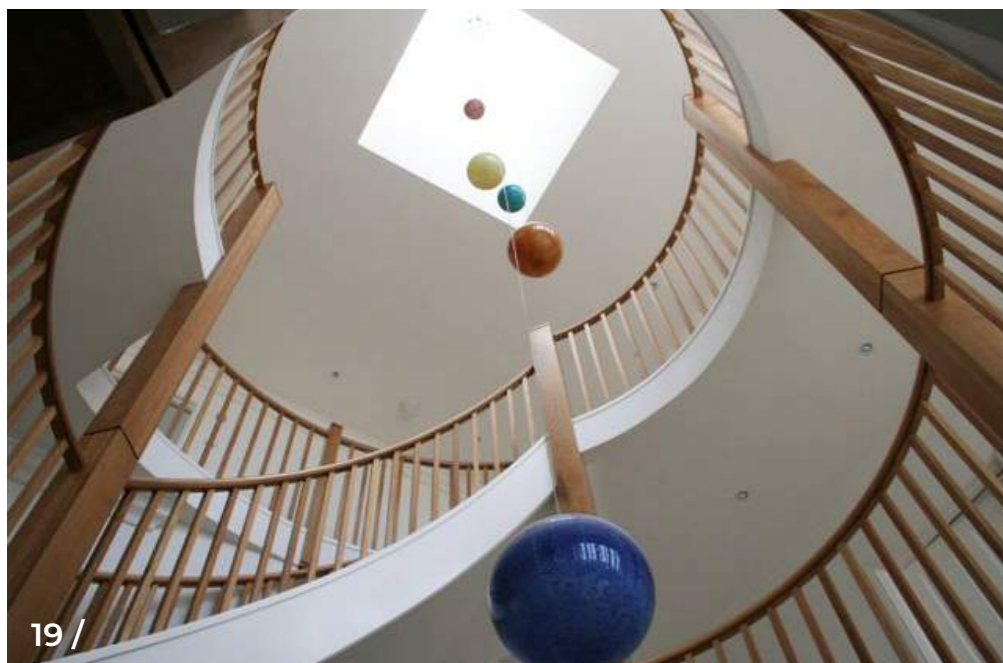
17 / American black walnut staircase with glazed balustrade and no handrail

18 / Open-rise oak staircase with glazed panel balustrade



STAIRCASES CONT.

- 19 / Award-winning three-storey circular staircase
- 20 / Oak closed string staircase with turned newells and spindles
- 21 / Cut string paint and stained hardwood staircase with panelled newel posts
- 22 / Barn conversion staircase on painted carriages
- 23 / Open rise oak staircase with anti-slip and metal spindles
- 24 / Walnut cut string staircase with integral lights
- 25 / Painted cut string curved staircase and wall panelling



HOME OFFICE

1-2 / Purpose-built desk, display cabinet and storage

3-4 / Traditional desk with built-in drawers and cupboards and a bespoke display cabinet

5 / 3D visualisation of a wrap-around library with exposed and concealed cupboards

6 / Bespoke bookcase to cover the wall either side of the door openings

7 / Wall panelling, built to match an existing room



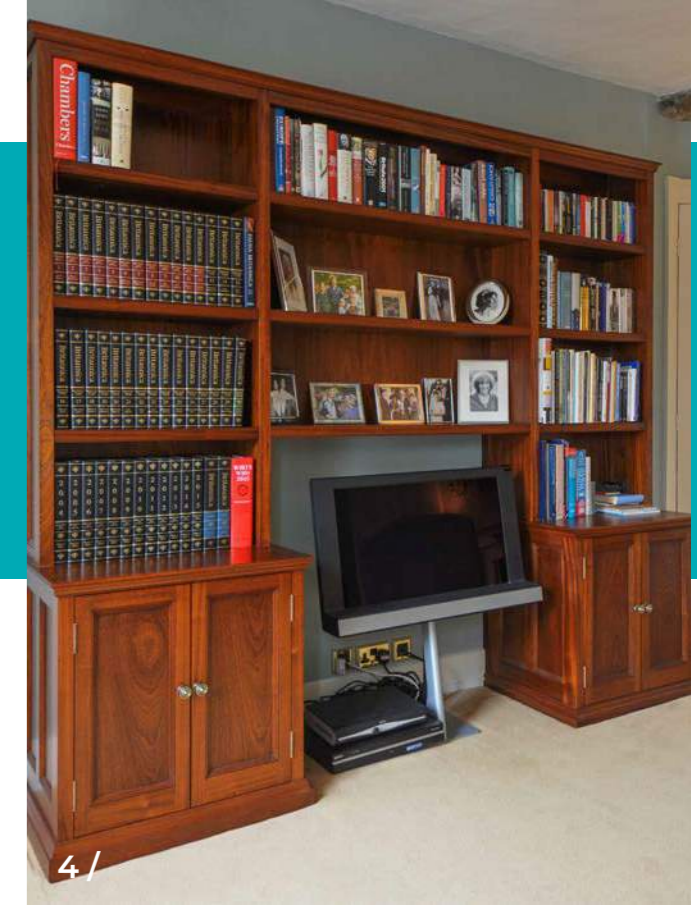
1 /



2 /



3 /



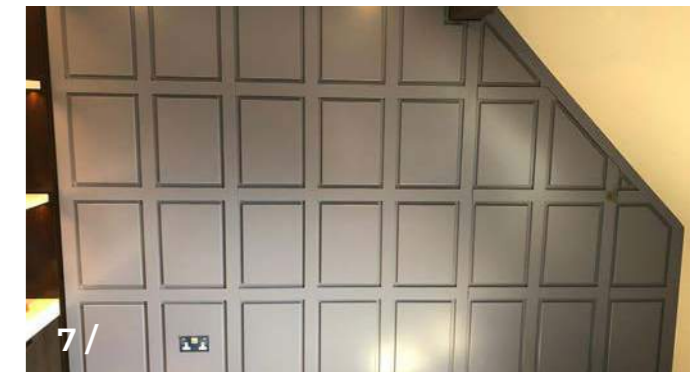
4 /



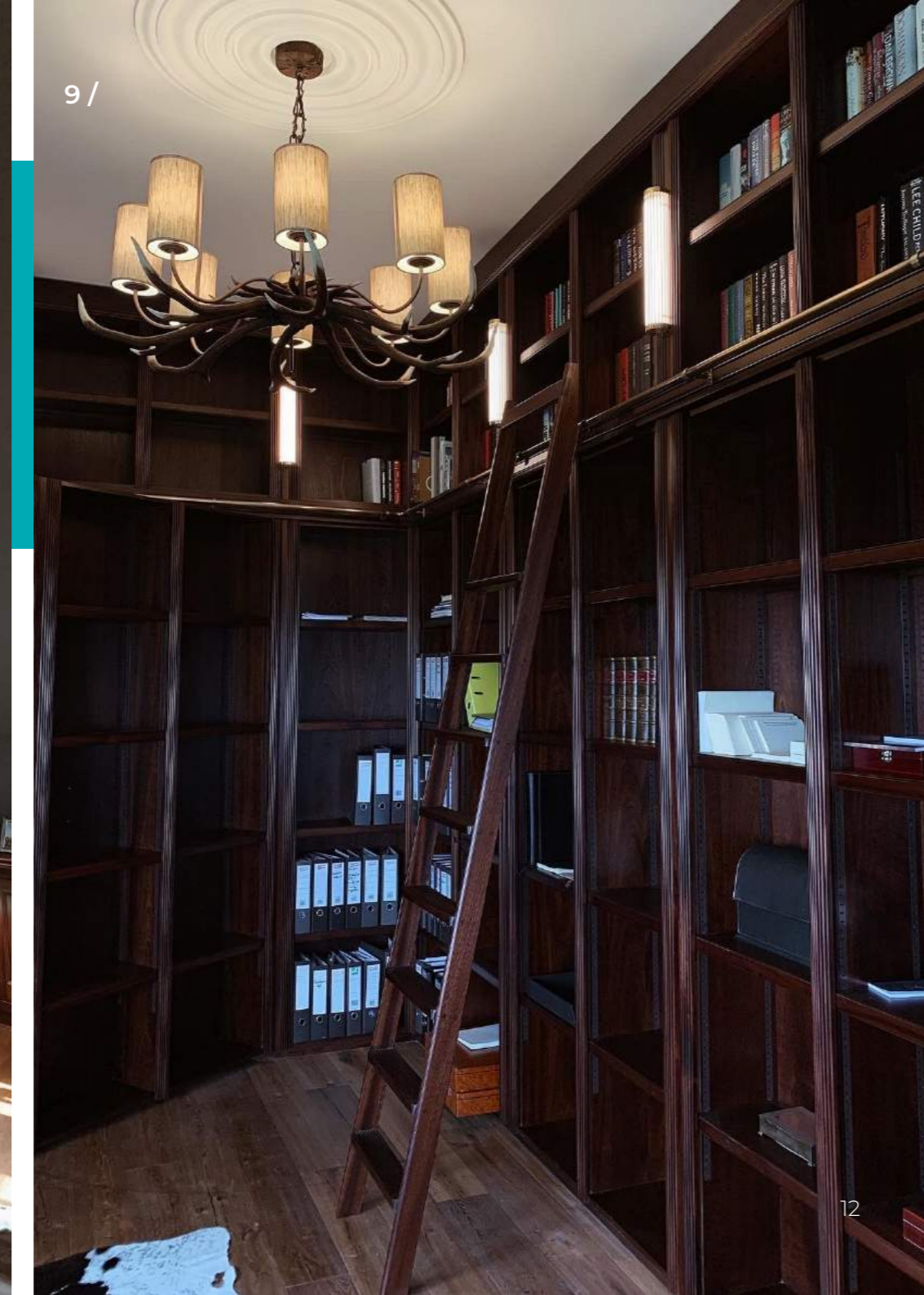
5 /



6 /

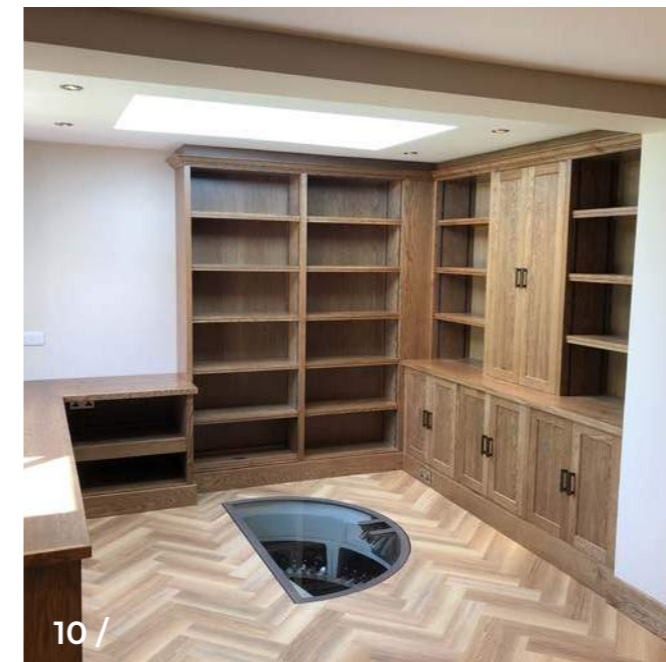


7 /



HOME OFFICE CONT.

- 8-9 / Full height library with an integrated desk and meeting area
- 10 / Built-in wrap-around desk, bookcase and storage cabinet
- 11 / Bespoke bookcase showcasing oak and colour combination
- 12 / Wrap-around office storage with integrated lightes and panelling



BEDROOMS

- 1/ Built-in wardrobes and freestanding drawer unit
- 2/ Double wardrobe with panelling
- 3/ Matching dressing table and wardrobe
- 4/ Built-in wardrobe with a gloss finish and integrated handles

- 5-6/ Built-in wardrobes and dressing table
- 7/ Wrap-around bedroom furniture with integrated lighting
- 8/ Set of built-in wardrobes with integrated mirrors
- 9/ Set of bedside tables with three drawers



KITCHENS

1-4 / Painted hardwood kitchen with an inframe door design, integral wine racks and solid surface Corian worktops. The cupboards and worktops are complemented by antique mirrors, Farrow & Ball Cornforth White and Hague Blue paint and etched draw details.



KITCHENS CONT.

5-6 / Hand-painted hardwood kitchen with an inframe design and solid granite worktops.

7-8 / Hand-painted hardwood kitchen with an inframe design, a beautiful solid iroko island counter top and integrated storage solutions.

9-11 / Spray-finished inframe kitchen to replicate previous following fire damage, with a few modern additions.



INTERNAL DOORS

- 1/ Sliding barn-style door
- 2/ Built-in wardrobe doors with architrave sets
- 3/ Painted door with circular relief detail
- 4/ Glazed walnut door
- 5/ Pair of glazed walnut doors
- 6/ Built-in wardrobe door set
- 7/ Folding and sliding room partition door set
- 8/ Walnut doors with brushed stainless steel inserts
- 9/ Pair of two pane glazed doors with bevel edged glass



1/



2/



3/



4/



5/



6/



7/



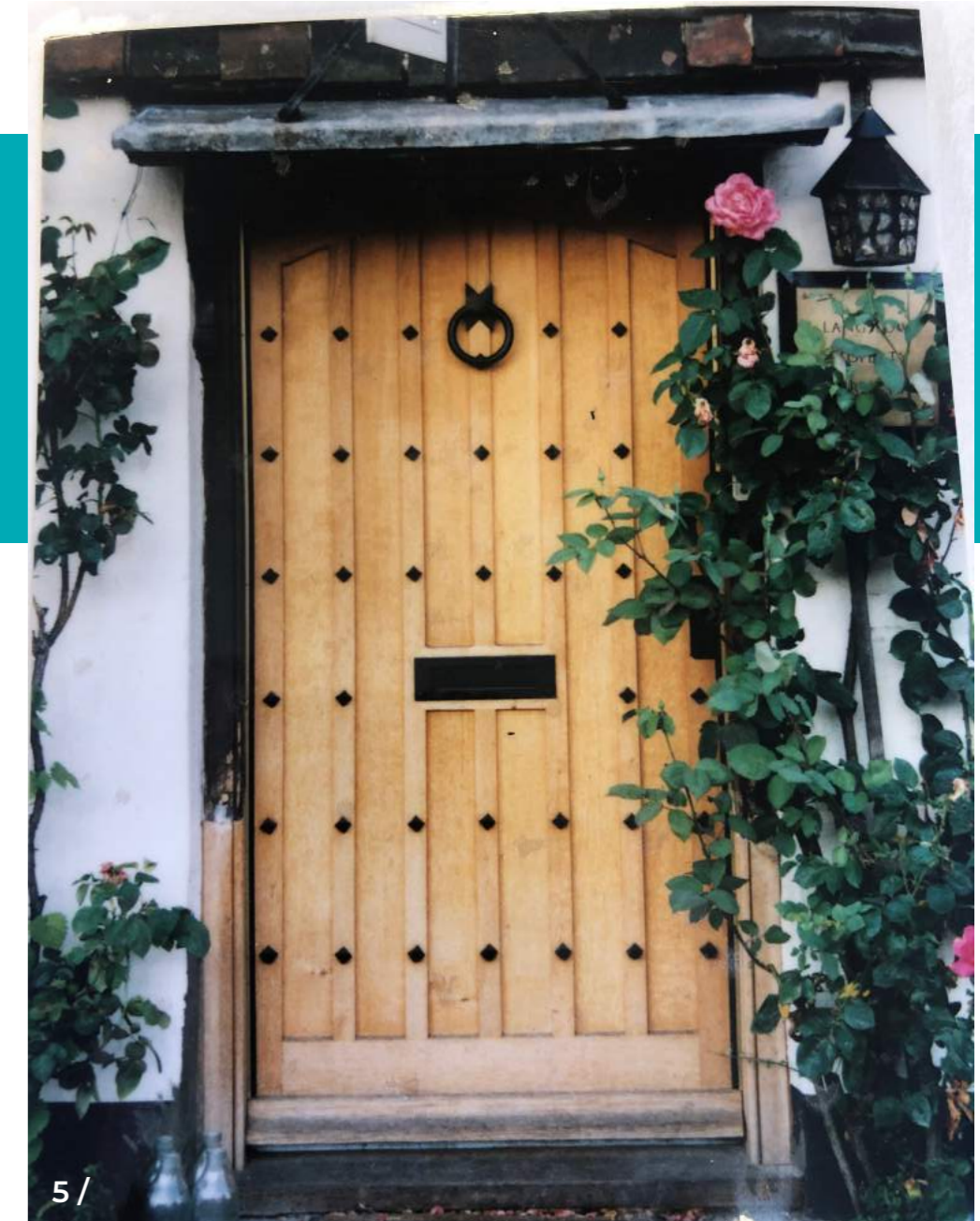
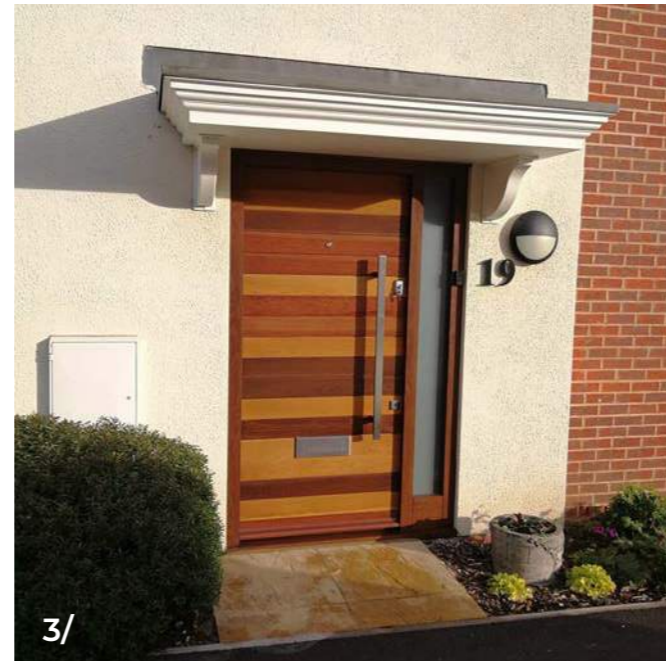
8/



9/

EXTERNAL DOORS

- 1/ Iroko door with painted side lights
- 2/ Mirror black finish hardwood door with obscured side lights
- 3/ Horizontal boarded door mixed hardwoods to meet client specification
- 4/ Oak-boarded door with glazed sidelights
- 5/ Solid oak planked door with antique black studs



EXTERNAL DOORS CONT.

- 6 / Traditional flush bead panelled door
- 7 / Traditional glazed and panelled door
- 8 / Random width oak T&G door and sidelights
- 9 / Air-dried oak-panelled door
- 10 / Sapele door with narrow glass panes



GATES

- 1/ External image of stained softwood gates
- 2/ Oiled finish iroko hardwood gate
- 3/ A pair of swept head bordered oak gates
- 4/ A pair of solid oak feature entrance gates

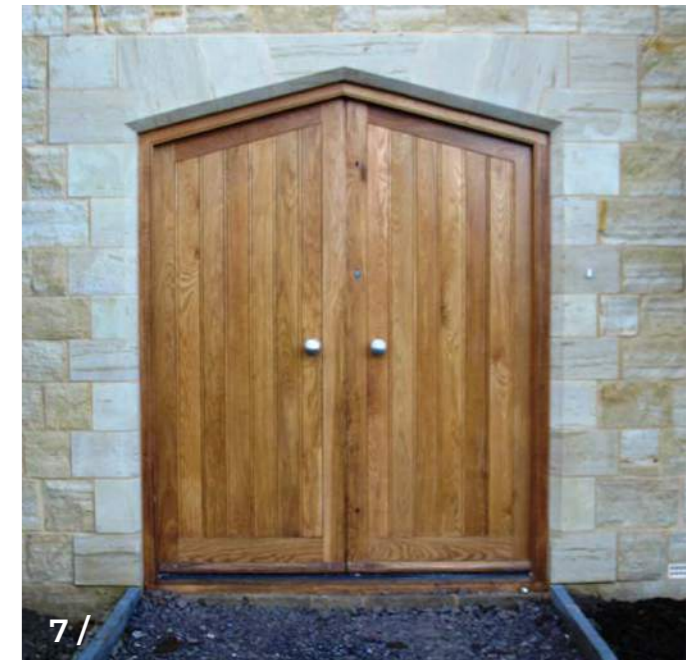
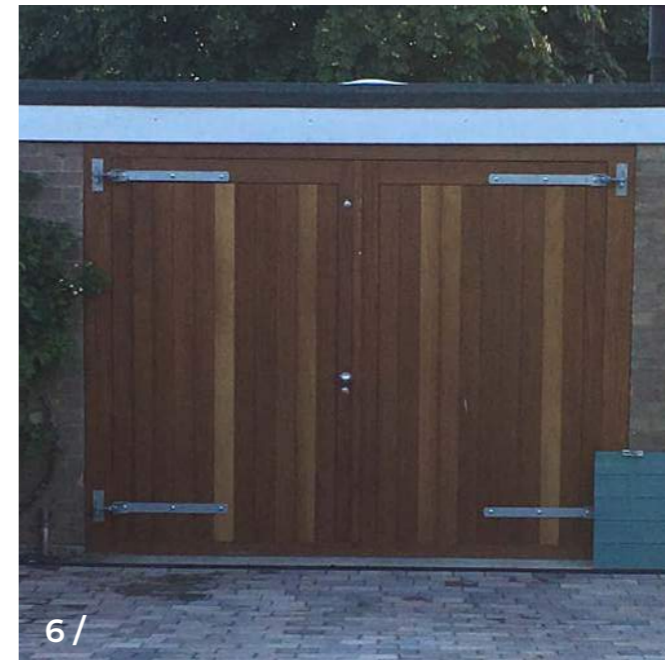
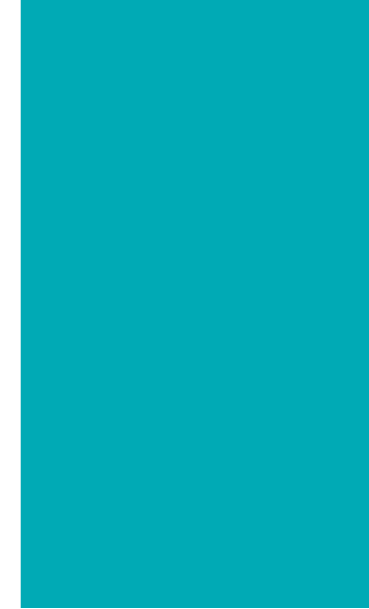
- 5/ Natural finish oak shaped gates
- 6/ Internal image of stained softwood gates showing concealed personnel door
- 7/ A pair of radius head panelled gates with single side panelled entrance gate to match



GARAGE DOORS

- 1/ A pair of painted hardwood garage doors and a matching front door
- 2/ Iroko glazed and T&G panelled doors
- 3/ Iroko T&G full height door
- 4/ A pair of Iroko solid-boarded doors

- 5/ A pair of full-height boarded doors with integral personnel door
- 6/ A pair of TGV Iroko hardwood garage doors
- 7/ Angular-shaped head pair of doors and frame



WINDOWS

- 1/ Double glazed hardwood painted windows with oak front door
- 2/ Painted hardwood casement windows with applied glazing bar
- 3/ Hardwood stained casement windows and feature front door
- 4/ Painted hardwood casement windows and stable door

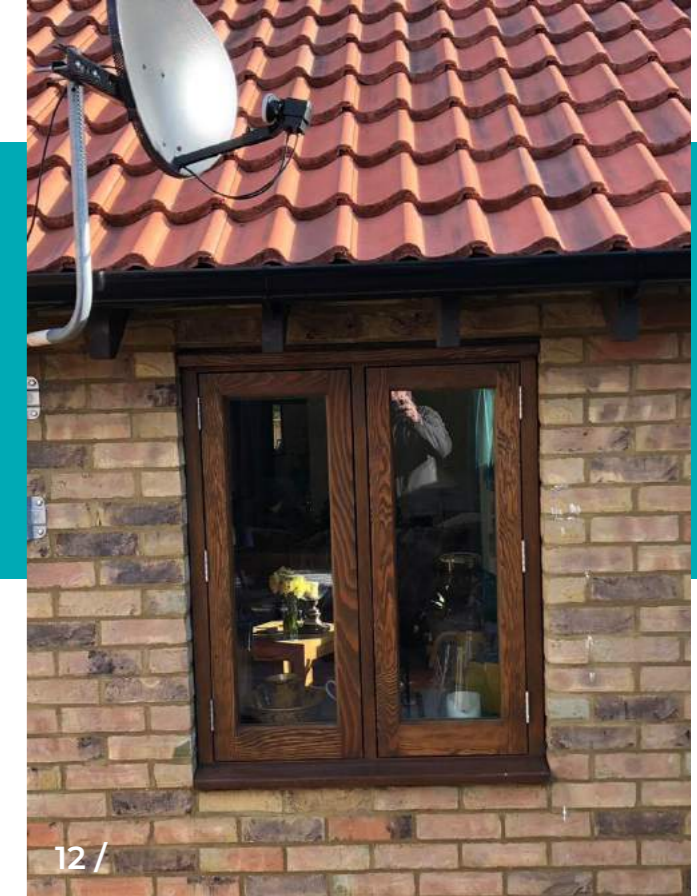
- 5/ Pair of French doors with sliding sash sidelights
- 6/ Hardwood painted sliding sash double glazed windows
- 7/ Development within a conservation area requiring sliding box sash windows



WINDOWS CONT.

- 8 / Sliding sash window with coloured top panes
- 9 / Stained softwood feature storey height windows
- 10 / Sliding sash window with coloured top panes
- 11 / Traditional vertical sliding sash windows

- 12 / Stained finish BC pine double casement window
- 13 / Stained finish BC pine triple casement window



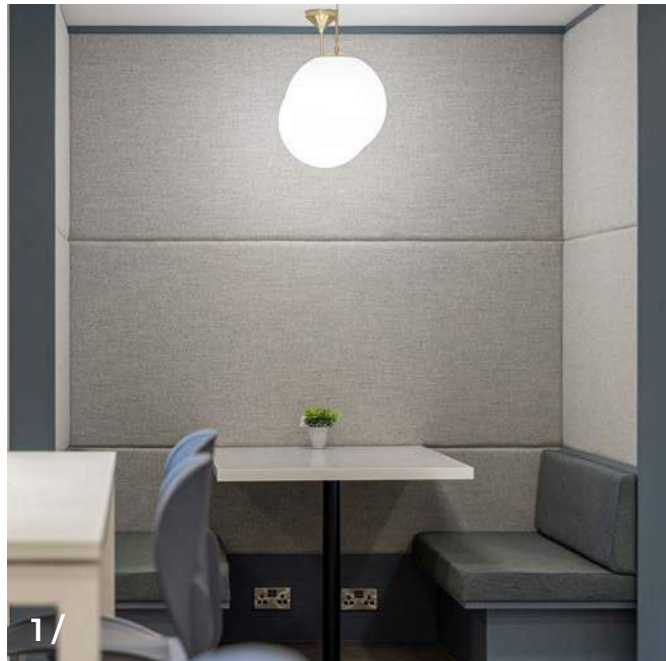
ROOF LANTERNS & TRUSSES

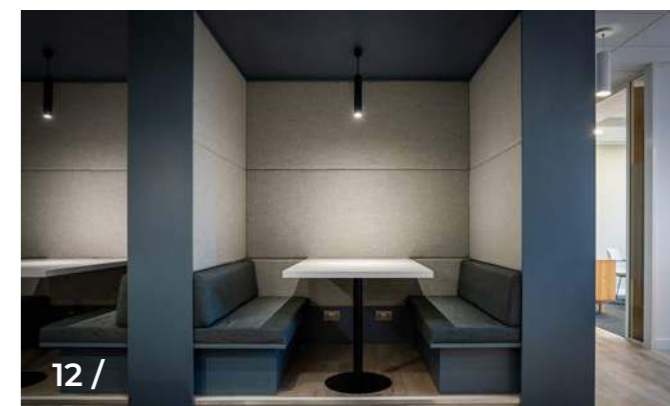
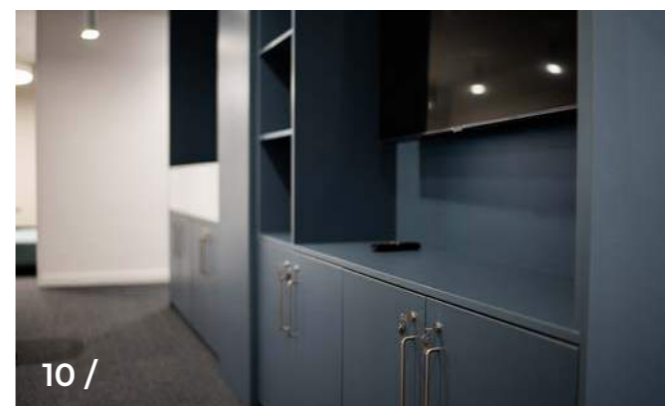
- 1/ King pin feature oak truss after installation
- 2/ Timber roof lantern with glazed upstand
- 3/ Direct glazed non-opening roof lantern
- 4/ Feature oak trusses in a pool room
- 5/ King pin feature oak truss ready for delivery
- 6/ Painted hardwood glazed lantern with patent capping system



COMMERCIAL

1 - 12 / A range of bespoke joinery items, including seat booths with fabric wrapped panels, storage cabinets with a bespoke planter, display cabinets, banquet seating and a large two-person desk with corporate branding.



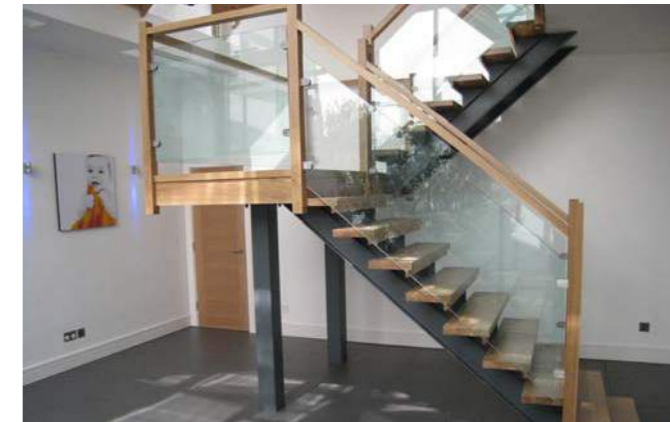
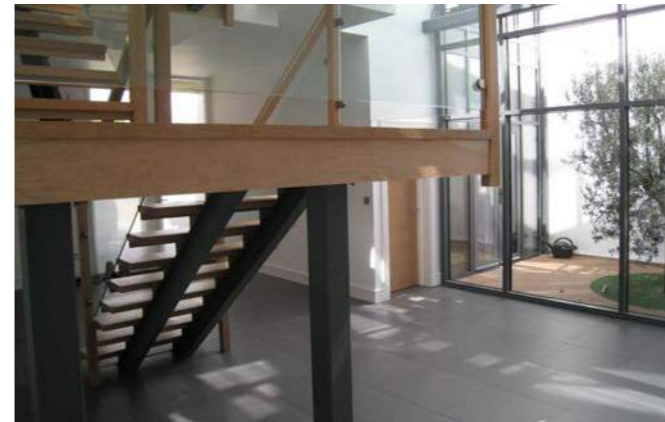




CASE STUDY | POOL ROOM

Working closely with the main contractor and architect, we produced the folding, sliding doors and glazed gablet screens within a green oak framed construction, complete with feature oak trusses to create a stunning private pool house.





CASE STUDY | MODERN BARN CONVERSION

Upon receipt of the architect's ideas and concepts, we undertook the contract to convert the existing staircase within a derelict barn. We created a bespoke contemporary oak and glass design that enabled access to each of the new first-floor rooms.



CASE STUDY | KITCHEN

Working with a specialist kitchen designer, we manufactured this high-end kitchen incorporating a self-contained island unit with a stunning Iroko hardwood worktop. The surrounding units and cupboards were manufactured from oak with a hand-painted finish.





01227 712353
enquiries@dbsj.co.uk

C-E, Boleyn House
Lakesview International Business Park
Canterbury, Kent
CT3 4GP